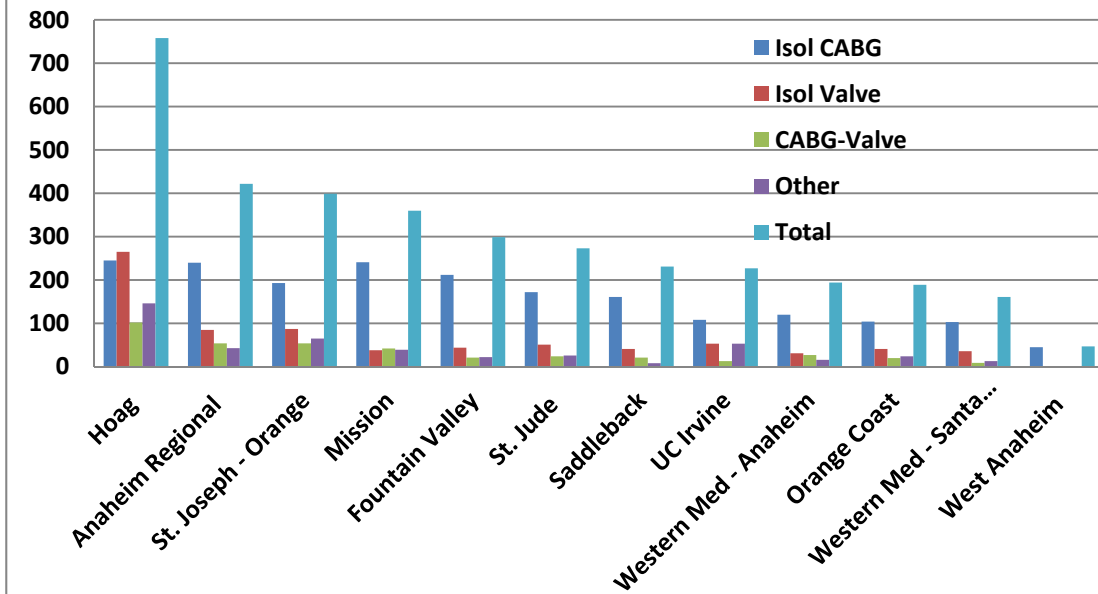
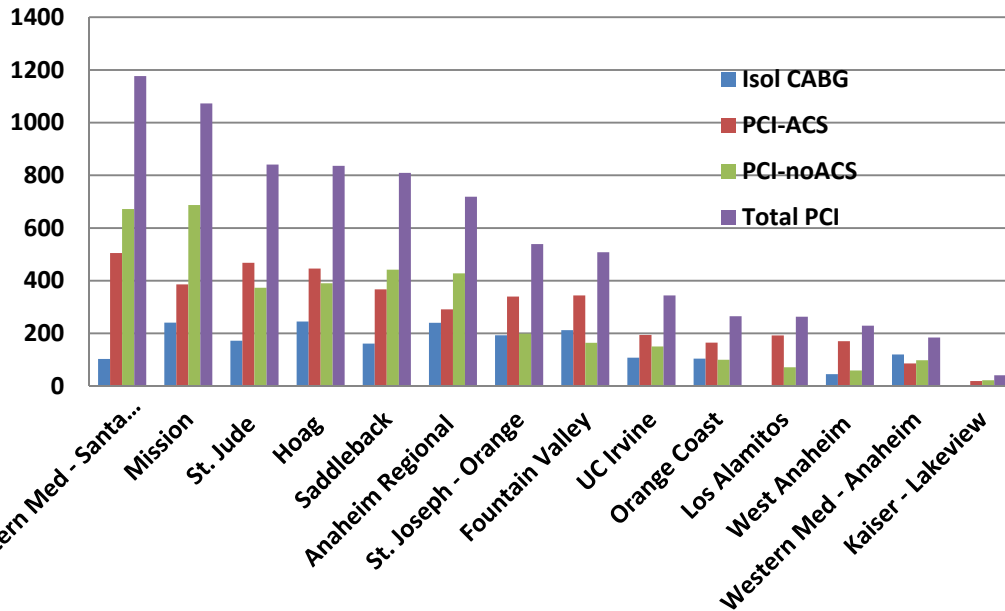


Orange County Surg Jan 2012-Dec 2013



Hospital	Isol CABG	Isol Valve	CABG-Valve	Other	Total
Hoag	245	265	102	146	758
Anaheim Regional	240	85	54	43	422
St. Joseph - Orange	193	87	54	65	399
Mission	241	38	42	39	360
Fountain Valley	212	44	21	22	299
St. Jude	172	51	24	26	273
Saddleback	161	41	21	8	231
UC Irvine	108	53	13	53	227
Western Med - Anaheim	120	31	27	16	194
Orange Coast	104	41	20	24	189
Western Med - Santa Ana	103	36	9	13	161
West Anaheim	45	1	0	1	47

Orange County PCI Jan 2012-Dec 2013



Hospital	Isol CABG	PCI-ACS	PCI-noACS	Total PCI	PCI/CABG	%ACS
Western Med - Santa Ana	103	505	672	1,177	11.43	42.9
Mission	241	386	687	1,073	4.45	36.0
St. Jude	172	468	373	841	4.89	55.6
Hoag	245	446	390	836	3.41	53.3
Saddleback	161	367	442	809	5.02	45.4
Anaheim Regional	240	291	428	719	3.00	40.5
St. Joseph - Orange	193	340	199	539	2.79	63.1
Fountain Valley	212	344	164	508	2.40	67.7
UC Irvine	108	194	150	344	3.19	56.4
Orange Coast	104	165	100	265	2.55	62.3
Los Alamitos	0	192	71	263	N/A	73.0
West Anaheim	45	170	59	229	5.09	74.2
Western Med - Anaheim	120	86	98	184	1.53	46.7
Kaiser - Lakeview	0	19	22	41	N/A	46.3