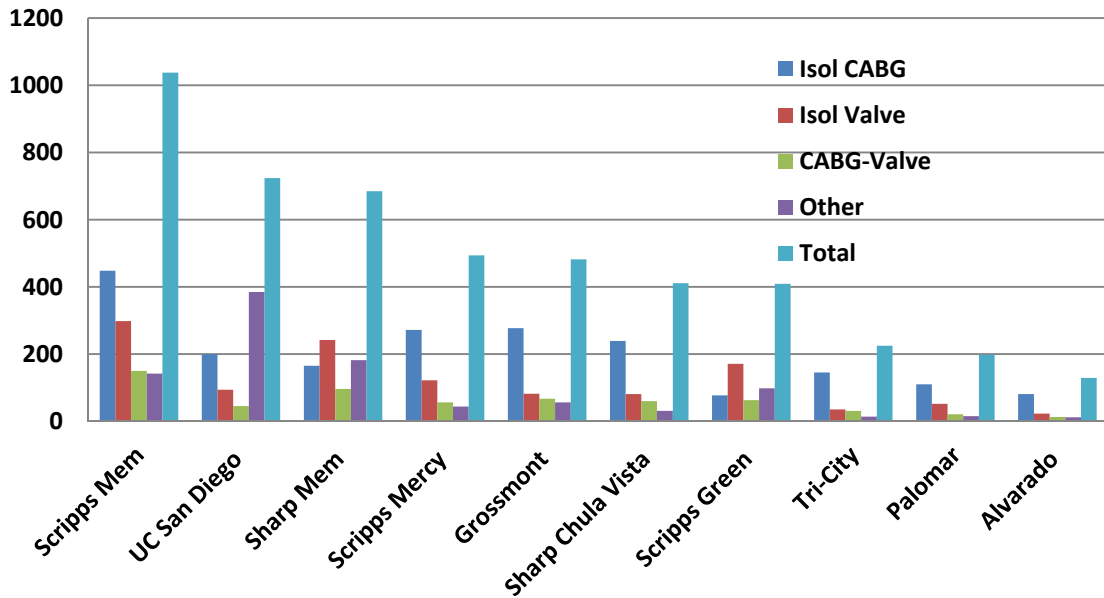
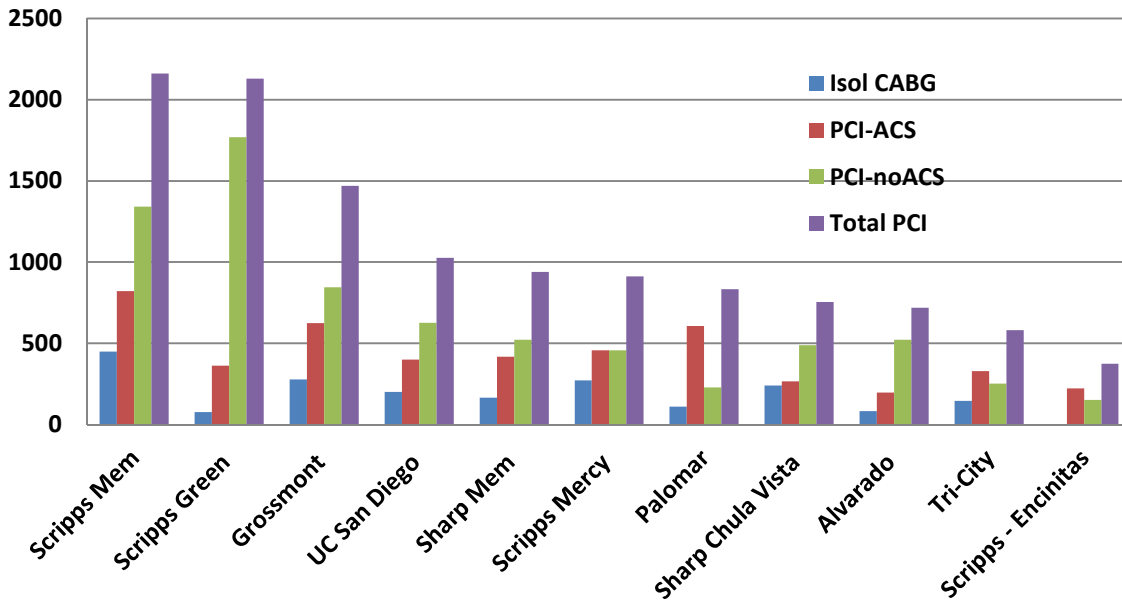


## San Diego Area Surg Jan 2012-Dec 2013



Hospital	Isol CABG	Isol Valve	CABG-Valve	Other	Total
Scripps Mem	448	298	150	142	1,038
UC San Diego	200	94	45	385	724
Sharp Mem	165	242	96	182	685
Scripps Mercy	272	122	56	44	494
Grossmont	277	82	67	56	482
Sharp Chula Vista	239	81	60	31	411
Scripps Green	77	171	63	98	409
Tri-City	145	35	31	14	225
Palomar	110	52	21	15	198
Alvarado	81	23	13	12	129

## San Diego Area PCI Jan 2012-Dec 2013



Hospital	Isol CABG	PCI-ACS	PCI-noACS	Total PCI	PCI/CABG	%ACS
Scripps Mem	448	821	1,341	2,162	4.83	38.0
Scripps Green	77	362	1,769	2,131	27.68	17.0
Grossmont	277	625	844	1,469	5.30	42.5
UC San Diego	200	399	627	1,026	5.13	38.9
Sharp Mem	165	418	522	940	5.70	44.5
Scripps Mercy	272	456	456	912	3.35	50.0
Palomar	110	607	227	834	7.58	72.8
Sharp Chula Vista	239	266	489	755	3.16	35.2
Alvarado	81	196	522	718	8.86	27.3
Tri-City	145	329	252	581	4.01	56.6
Scripps - Encinitas	0	222	151	373	N/A	59.5